



Intellectual Disability Reference Group

Easy Read meeting bulletin

22–23 October 2025



How to use this bulletin



We are the Independent Advisory Council (IAC).

We give advice about ways to make the NDIS better.



We wrote some words in **bold**.

We explain what these words mean.

There is also a list of these words on page [26](#).



We wrote this **bulletin**.

A bulletin is an important news item we share with the community.

It explains what we did in our meeting.



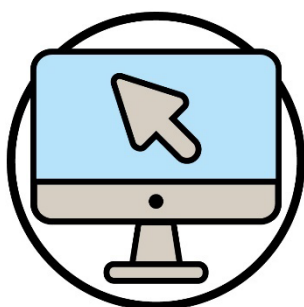
You can ask someone you trust for support to:

- read this bulletin
- find more information.



This is an Easy Read summary of another bulletin.

It only includes the most important ideas.



You can find the other bulletin on our website.

www.ndis-iac.com.au/meetings

What's in this bulletin?

About this Reference Group	5
What did the NDIA share at the meeting?	7
What issues did the community share?	9
Update about supported independent living	20
Update on the IAC's advice	22
Our next meeting	24
More information	25
Word list	26

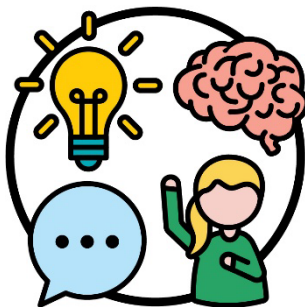
About this Reference Group



A **Reference Group** is a group of people who give us advice about a certain topic.



The Reference Group shares their ideas with the IAC about how to support people with **intellectual disability**.



An intellectual disability affects how you:

- learn new things
- solve problems
- communicate
- do things on your own.

This includes support to:



- take part in the community



- make your own decisions.



The IAC use these ideas when they write their advice for the National Disability Insurance Agency (NDIA) Board.

We just call them the **NDIA Board**.



The NDIA Board is a group of people who make decisions about all parts of the NDIA.

What did the NDIA share at the meeting?



The NDIA said it's creating the Gavin Burner Excellence in Diversity and Inclusion Award.

The award recognises the work Gavin Burner did to speak up for:



- people with disability



- **inclusion.**



Inclusion means everyone:

- can take part
- feels like they belong.

The award will go to NDIA staff members who work to improve inclusion for:



- everyone in the NDIA



- **participants.**

Participants are people with disability who take part in the National Disability Insurance Scheme (NDIS).

What issues did the community share?



Reference Group members connected with the community to find out about issues that affect them.



This includes issues that affect participants.



Members shared reports about these issues with the NDIA.



People from the NDIA also shared its response to some of these issues.

Services in areas far away from cities and towns



Reference Group members said there are not enough services in areas far away from cities and towns.

Participants told members that:



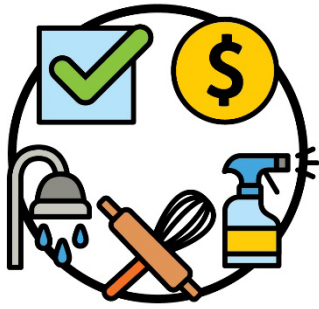
- there are not enough services for certain things – like support to improve how your body moves



- they are worried they will lose their **funding** if they don't use it.



Funding is money from your **NDIS plan** that pays for the supports you need.



An NDIS plan has information about:

- a participant and their goals
- what supports they need
- what the NDIS will pay for.

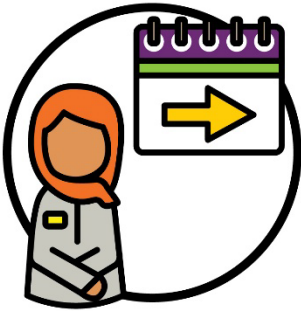


Members asked the NDIA to support more **providers** to stay in areas far away from cities and towns.



Providers support people with disability by delivering a service.

The NDIA said it's working on a program to:



- support the future of support workers



- improve information about issues for some jobs.

Assessments for NDIS supports



The NDIA will start using a new tool for NDIS **assessments** next year.

The NDIA uses assessments to work out:



- how someone's disability affects their life



- what funding someone needs from the NDIS.



The community told Reference Group members that the NDIA didn't share enough information about the tool.

For example:



- how the tool works



- how the people doing assessments will understand the results.



The NDIA said the new tool will make sure the assessment focuses on what a participant can do.



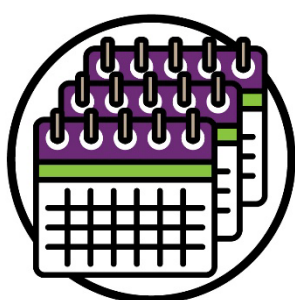
The NDIA also said the new tool will mean participants won't need to collect as much proof about their disability.

Plan reassessments



When the NDIA does a **plan reassessment**, it checks to see if the supports in an NDIS plan still work well for a participant.

Reference Group members said:



- participants should have more time to get ready for their plan reassessment



- the NDIA needs to get better at telling participants about their plan reassessment.



The NDIA said it's working on ways to improve how it does plan reassessments.

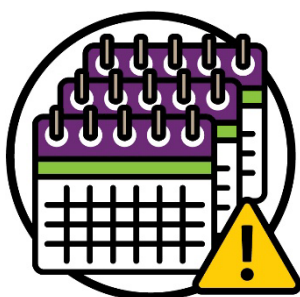


For example, there are people in NDIA contact centres who can make changes to plans straight away.

Funding for home and living supports



Sometimes participants need home and living support quickly.



But it can take the NDIA too long to:

- make a decision
- organise a plan reassessment.



Reference Group members said the NDIA needs to make decisions about funding for home and living supports quicker.



Members said **funding periods** for home and living supports should be 6 months long.



Funding periods tell someone:

- when part of a participant's funding can be used
- how long a participant's funding needs to last.

Housing providers



Reference Group members said they want providers who build housing to:

- find out what participants need
- design housing that supports what participants need.



Members are worried about some disability housing providers.



Members said some of these providers will make participants feel like they have to get their other supports from them.



Participants feel like this takes away their choice and control.

Easy Read NDIS plans



Reference Group members said the NDIA should create NDIS plans in Easy Read.



This can help make NDIS plans easier to read for participants with intellectual disability.

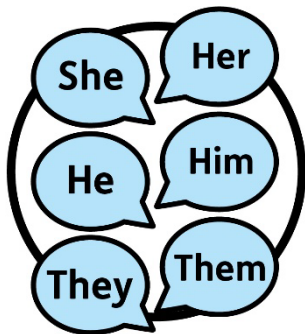


The NDIA said it has started to look at ways to make Easy Read NDIS plans.

Participant pronouns



Reference Group members said some providers don't use the right **pronouns** for participants.



Pronouns are the way we refer to someone instead of their name.

For example, she and her.



Members said it's very important that providers respect:

- people for who they are
- the choices people make about their life.

Update about supported independent living



Inclusion Australia shared the work they're doing with the **NDIS Quality and Safeguards Commission**.

We just call them the NDIS Commission.



The NDIS Commission makes sure people with disability who take part in the NDIS:

- are safe
- get good services.



They are working on new rules on ways to make **supported independent living (SIL)** better.



SIL is when people with disability live in their own home but get support to do daily tasks.

For example, cooking and cleaning.

These rules will make sure providers and support workers:



- offer safe and good services



- treat participants well



- tell participants about their **rights**.



Rights are rules about how people must treat you:

- fairly
- equally.

Update on the IAC's advice



The IAC's Independent Advisor gave an update.



The IAC's Independent Advisors are people who work with the IAC and Reference Groups.



They help the IAC and Reference Groups make their advice.



The IAC is focusing on creating the home and living advice.



The IAC also shared its advice about improving behaviour supports in the NDIS.



The NDIA will share its response to the **palliative care** advice in **2026**.



Palliative care is special support for people who are:

- very sick
- near the end of their life.



The IAC's Independent Advisor also shared how the IAC is creating advice for the **justice system**.



The justice system makes sure everyone is treated fairly and follows the law.

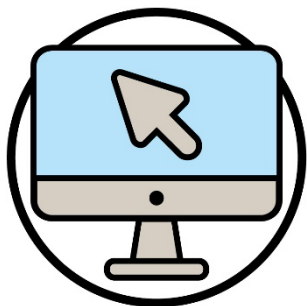
The justice system includes:

- prisons
- courts
- police.

Our next meeting



Our next meeting will be in **March 2026.**

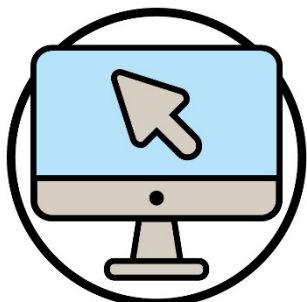


You can find out more about our meetings and bulletins on our website.

www.ndis-iac.com.au/meetings

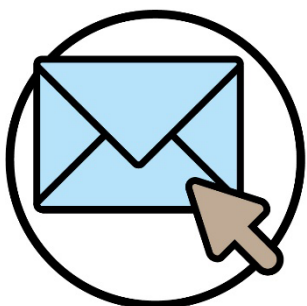
More information

For more information about this bulletin, please contact us.



You can visit our website.

www.ndis-iac.com.au



You can send us an email.

advisorycouncil@ndis.gov.au



You can learn more about the NDIS on their website.

www.ndis.gov.au



You can call the NDIS.

1800 800 110

Word list

This list explains what the **bold** words in this bulletin mean.



Assessment

The NDIA uses assessments to work out:

- how someone's disability affects their life
- what funding someone needs from the NDIS.



Bulletin

A bulletin is an important news item we share with the community.

It explains what we did in our last meeting.



Funding

Funding is money from your NDIS plan that pays for the supports you need.

Funding periods



Funding periods tell someone:

- when part of a participant's funding can be used
- how long a participant's funding needs to last.



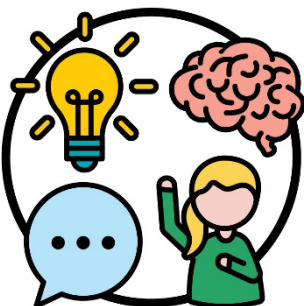
Inclusion

Inclusion means everyone:

- can take part
- feels like they belong.

Intellectual disability

An intellectual disability affects how you:



- learn new things
- solve problems
- communicate
- do things on your own.



Justice system

The justice system makes sure everyone is treated fairly and follows the law.

The justice system includes:

- prisons
- courts
- police.



NDIA Board

The NDIA Board is a group of people who make decisions about all parts of the NDIA.



NDIS Commission

The NDIS Commission makes sure people with disability who take part in the NDIS:

- are safe
- get good services.

NDIS plan



An NDIS plan has information about:

- a participant and their goals
- what supports they need
- what the NDIS will pay for.



Participants

Participants are people with disability who take part in the NDIS.



Plan reassessment

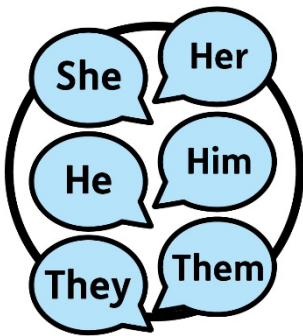
When the NDIA does a plan reassessment, it checks to see if the supports in an NDIS plan still work well for a participant.



Palliative care

Palliative care is special support for people who are:

- very sick
- near the end of their life.



Pronouns

Pronouns are the way we refer to someone instead of their name.

For example, she and her.



Providers

Providers support people with disability by delivering a service.



Reference Group

A Reference Group is a group of people who give us advice about a certain topic.



Rights

Rights are rules about how people must treat you:

- fairly
- equally.



Supported independent living (SIL)

SIL is when people with disability live in their own home but get support to do daily tasks.

For example, cooking and cleaning.



The Information Access Group created this Easy Read document using stock photography and custom images.

The images may not be reused without permission.

For any enquiries about the images, please visit

www.informationaccessgroup.com. Quote job number 6212-B.



**Independent
Advisory
Council**
to the **ndis**



ndis-iac.com.au